

FORD

'93

MUSTANG



1993 MUSTANG

If you're really serious about the fun of driving, for you there's Ford Mustang. The car that puts sporty car styling and performance on every street and highway in America.

At right is the Mustang lineup for 1993. Add up the combinations of models and bodystyles and you have eight great Mustangs in all.

Choose the personal 2-door sedan style, or the versatile hatchback design with split fold-down rear seat backs and 30 cu. ft. of cargo space (with the seat backs lowered).

And there's the Convertible, the style that captures Mustang's free-spirited nature. It comes with a power-retractable top with glass rear window, decklid luggage rack, power windows and locks, and electric remote mirrors.

Now pick the model that best suits your style of driving. A high-performance Mustang GT or Mustang LX 5.0L. Or standard Mustang LX.

MUSTANG LX: SPORTY AND FUN, AND PRACTICAL

The Mustang LX combines sporty styling with the spirited yet economical performance of a 2.3-liter I-4 engine, equipped with two spark plugs per cylinder and the precise fuel delivery of a multi-port electronic fuel injection system (EPA estimates unavailable at press time).



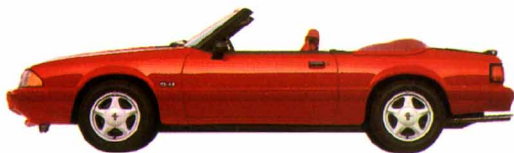
Mustang GT 2-Door Hatchback



Mustang GT Convertible



Mustang LX 5.0L Hatchback



Mustang LX 5.0L Convertible



Mustang LX 5.0L 2-Door Sedan



Mustang LX 2-Door Hatchback



Mustang LX Convertible



Mustang LX 2-Door Sedan

Also in Mustang LX's list of standard features are power steering, power front disc/rear drum brakes, and nitrogen gas-pressurized hydraulic front struts and rear shocks. Plus many features for your comfort and safety, including a driver-side air bag Supplemental Restraint System (SRS) designed for use with your safety belts.

MUSTANG GT AND LX 5.0L: FAMED FORD MUSCULAR V-8 POWER

Mustang V-8 performance is legendary. And it's yours to enjoy in the Mustang GT with its bold "ground effects" styling, or in the Mustang LX 5.0L with its smooth, clean styling lines.

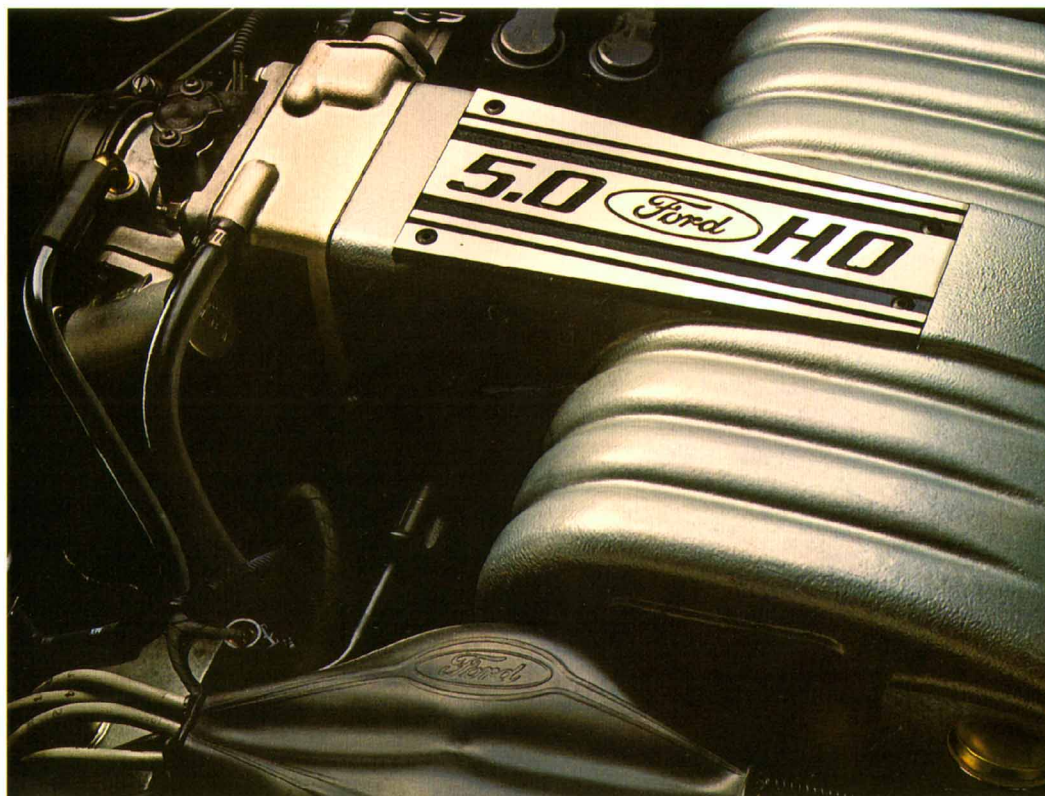
A state-of-the-art sequential electronic fuel injection system is one of the many features of their potent 5.0-liter HO (high output) V-8 engine. And that's not all.

GT and LX 5.0L are equipped with progressive-rate coil springs and higher-rate stabilizer bars. They have a quadra-shock rear suspension consisting of vertical-mounted gas-pressurized shocks and horizontal-mounted hydraulic axle dampers. And they ride on 16-inch Z-rated tires. So they're every bit as exciting on the skid pad.

With their awesome power and agile handling, the GT and LX 5.0L Mustangs deliver a level of driving excitement as few other cars can.



HIGH-PERFORMANCE MUSTANG



There's an old saying which sums up very nicely what our V-8-powered Mustangs do extremely well: "The shortest distance between two points is a straight line."

A straightforward, no-nonsense approach to delivering a large infusion of driving excitement over a very short distance, and very quickly — this is what the Mustang GT and Mustang LX 5.0L are all about, pure and simple.

Their 5.0-liter HO (high output) V-8 is one of the most powerful production engines in America, with proven high-performance components such as forged steel connecting rods, double roller timing chain, tuned stainless steel tubular headers and dual exhausts, to mention just a few.

There's some pretty impressive high-tech hardware, too: A "sequential" electronic fuel injection system (SEFI) that delivers fuel precisely to the cylinders in sequence with the engine's spark firing order. And a sophisticated engine control computer called EEC-IV that governs the SEFI system as well as many other engine operations.

The 5.0's power is transmitted to the road by way of Ford's Traction-Lok rear axle. Traction-Lok automatically shifts some of the driving force, or torque, to the wheel with the most traction under adverse conditions like ice, snow or mud.

Team your 5.0 V-8 with a standard 5-speed manual overdrive gearbox or optional automatic. Either way, you'll enjoy the results.



SPORTY AND WELL-EQUIPPED

The basic idea behind the Mustang is simple: Build a sporty, fun-to-drive car that's within reach of just about anyone to enjoy.

For sure, Mustang is as much equipped for value as it's designed and engineered for driving

Mustang features an ergonomically designed and well-equipped interior. Everything you'd expect in a driver's car from Ford.

fun. You'll find reclining low-back bucket seats (standard in the LX) that are firm and supportive. Plus the clarity of analog gauges for battery voltage, fuel, engine temperature, and engine rpm (tachometer).

This year, Mustang radios are designed to be operated more easily. And they're more powerful. Electronic AM/FM stereo is standard; a cassette player with "auto-reverse" and premium sound components is included in Preferred Equipment Packages. And what's more, now available is the superb performance of a compact disc player.

Tinted glass, variable-timed interval wipers, courtesy lights (engine compartment, ashtray, glove box, cargo area/trunk), headlamps-on warning chime, a center console with armrest, split fold-down rear seats (hatchback) — these and many other features also come standard.

Now get behind the wheel of a Mustang GT or an LX 5.0L. They come equipped with a thickly padded leather-wrapped sport steering wheel and articulated sport bucket seats featuring adjustable seat cushion side bolsters and power lumbar support. These seats are also available with leather seating surfaces.

Along with Mustang's great list of features you also enjoy the benefits of an ergonomic design: legible, easy-to-read instruments; controls that are easy to reach and operate; seating that promotes proper posture and helps reduce fatigue.

Just what you'd expect in a real driver's car.



Above: Articulated sport bucket seats, standard in GT and LX 5.0L, shown with available leather trim in Opal Grey.

Left: Standard LX interior in Ruby Red.

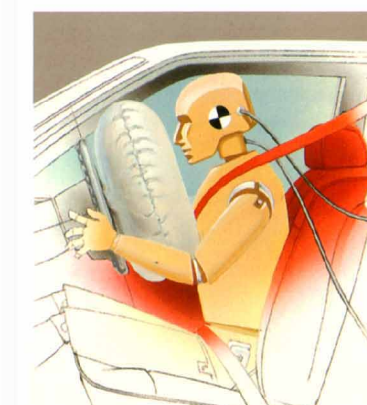


Mustang has safety features designed to help you avoid an accident. Like well-engineered steering and suspension systems.

Equally important are occupant protection features that help protect you in an accident, such as the driver air bag Supplemental Restraint System (SRS).

From impact to full deployment, the air bag inflates in less than 1/10 of a second. And it begins to deflate in but a fraction of a second.

Always remember that the air bag is intended to supplement, not replace, your lap and shoulder safety belt system, which provides protection in all types of impacts.



Left: Fold down one or both of the 50/50 split rear seat backs (hatchback model). Between the front seats is a mini-console with armrest. Power window and door lock controls (Preferred Equipment Package features) are located on an ergonomic door armrest. Some equipment shown on these pages is optional.



MUSTANG EQUIPMENT

Ford Mustang is designed, engineered and equipped for driving fun. And great value, too.

In addition to the standard features, there is a Preferred Equipment Package for each model, which offers a savings on the options included, compared with the prices of the items if they were purchased separately.

To further personalize your Mustang, choose from the selection of options available separately, some of which are shown here.



Left: The flip-up open-air roof option, for the hatchback model, lets in extra fresh air (when opened) and more sunshine.

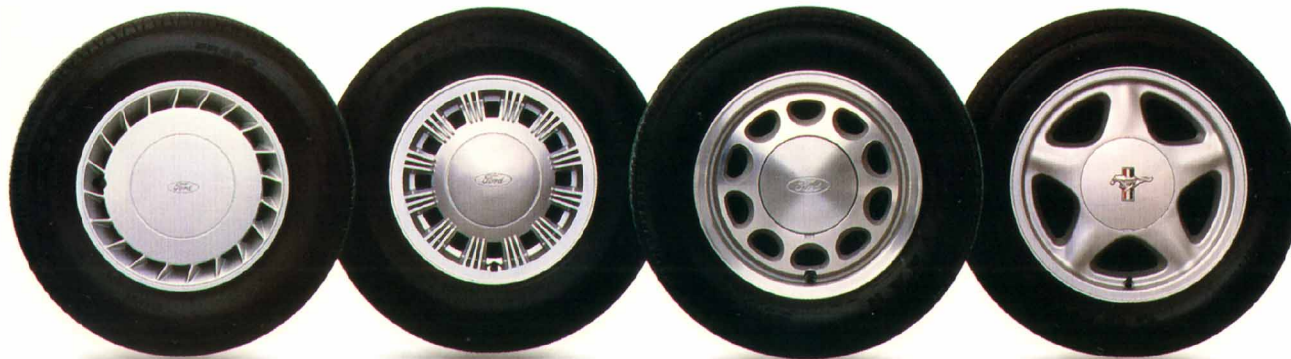


Both Mustang engines, the 2.3- and 5.0-liter, can be teamed with the convenience of an optional floor-mounted automatic overdrive transmission.

The rear window defroster option enhances visibility by keeping the window clear of frost or mist.



Now available for your listening enjoyment are the extraordinary clarity and performance of Mustang's new 80-watt compact disc player option.



Left to right: finned wheel cover (standard on LX); styled road wheel (included in LX Preferred Equipment Package); cast aluminum wheel (optional on LX); and 5-spoke cast aluminum wheel (standard on GT and LX 5.0L).

MAJOR STANDARD FEATURES

Exterior

- Urethane lower bodyside protection
- Dual remote-control mirrors, RH convex (sedans and hatchbacks)
- Finned wheel covers
- 5-spoke cast aluminum wheels (GT and LX 5.0L)
- Fog lamps (GT)

Interior

- Driver air bag supplemental restraint system (SRS)
- 3-point active lap/shoulder belts for all four occupants
- Center console with armrest
- Tachometer; trip odometer; voltmeter; temperature, fuel, oil pressure gauges
- Dual visor mirrors with covers
- Dome lamp (integrated in mirror on convertibles) with front door courtesy switches; engine compartment, glove box, front ashtray and luggage/cargo compartment lights; headlamps-on alert chime
- Split fold-down rear seat backs (hatchbacks)
- Low-back reclining cloth front bucket seats with cloth head restraints (LX)
- Articulated front sport seats, cloth trim and power lumbar supports (GT and LX 5.0L)
- Leather-wrapped steering wheel (GT and LX 5.0L)
- Tinted glass — complete
- Variable-timed interval windshield wipers
- New 24-watt electronic AM/FM stereo seek radio with digital clock and four speakers

Functional

- 2.3-liter twin-plug per cylinder, multi-port electronic fuel-injected I-4 engine (LX)
- 5.0-liter High Output SEFI V-8 (GT and LX 5.0L)
- 5-speed manual overdrive transmission
- Power rack-and-pinion steering
- Power front disc/rear drum brakes
- Modified MacPherson front suspension with coil springs (variable-rate with GT and LX 5.0L), stabilizer bar (larger diameter with GT and LX 5.0L), and nitrogen gas-pressurized hydraulic struts
- Four-bar link rear suspension with coil springs and nitrogen gas-pressurized hydraulic shocks
- Quadra-shock rear suspension with vertically mounted nitrogen gas-pressurized hydraulic shocks, horizontally mounted hydraulic axle dampers with freon-filled bag, .83" stabilizer bar, and variable-rate coil springs (GT and LX 5.0L)
- 14" x 5.5" stamped steel wheels
- 16" x 7" 5-spoke cast aluminum wheels (GT and LX 5.0L)
- Tires: P195/75R14 BSW (LX), P225/55ZR16 BSW all-season performance (LX 5.0L), P225/55ZR16 BSW performance (GT)
- Traction-lok axle (GT and LX 5.0L)
- Dual exhausts (GT and LX 5.0L)
- Luggage/cargo space: 10 cu. ft. (sedan); 12.2 cu. ft., rear seats up; 30 cu. ft., rear seats down (hatchback)

Convertibles

- Power retractable top with glass rear window
- Luggage rack with integral stop lamp
- Power side and quarter windows and power lock group
- Dual electric remote-control mirrors
- Luggage capacity (6.4 cu. ft.)

PREFERRED EQUIPMENT PACKAGES AND OPTIONS

P = Package feature S = Standard O = Optional
Note: Package content is subject to change.

	LX 240A	LX 5.0L 245A	GT 249A
Appearance/Comfort/Convenience			
Power Equipment Group: power door locks, remote-control trunk/hatch release, dual electric remote-control mirrors, and power side windows (1)	P	P	P
Speed control	P	P	P
Dual illuminated visor mirrors (2)	P	S	S
Air conditioning	O	O	P
Convenience group: cargo tie down net and front floor mats	O	O	P
Styled road wheels	P	-	-
Cast aluminum wheels (with P205/65R15 BSW tires)	O	-	-
Articulated front sport seats with leather seating surfaces	-	O	O
4-way power driver's seat	O	O	O
Clearcoat paint	O	O	O
Rear window defroster	O	O	O
Flip-up open air roof (hatchbacks only)	O	O	O
Titanium lower accent bodyside treatment (3)	-	-	O
Front license plate bracket	O	O	O
Stereo Systems			
New 80-watt electronic AM/FM stereo radio with cassette player, integral digital clock and premium sound system	P	P	P
New 80-watt compact disc player with electronic AM/FM stereo radio	O	O	O
Radio credit option (4)	O	O	O
Performance/Tires			
Automatic overdrive transmission	O	O	O
Optional axle ratio (see your dealer for details)	-	O	O
Engine block immersion heater	O	O	O
P225/55ZR16 BSW all-season performance tires	-	S	O
P225/55ZR16 BSW performance tires	-	O	S
P205/65R15 BSW tires (with cast aluminum wheels)	O	-	-

(1) Standard on convertible. (2) Not available on convertible. (3) Available with select GT colors. (4) No radio installed.

COLORS AND TRIMS

EXTERIOR PAINT COLORS LX and LX 5.0L	INTERIOR TRIM COLORS			
	Opal Grey	Royal Blue	Ruby Red	Black
Bright Red	■			■
Black Clearcoat (non-metallic)	■		■	■
Vibrant White	■	■	■	■
Electric Red Clearcoat Metallic	■		■	■
Royal Blue Clearcoat Metallic	■	■		
Reef Blue Clearcoat Metallic	■			■
Bright Calypso Green Clearcoat Metallic	■			■
Silver Clearcoat Metallic	■	■	■	■
GT				
Vibrant Red	■			■
Bright Red	■			■
Black Clearcoat (non-metallic)	■		■	■
Vibrant White	■		■	■
GT with Titanium Lower Accent Treatment				
Electric Red	■		■	■
Bright Blue Clearcoat Metallic	■			■
Royal Blue Clearcoat Metallic	■		■	
Reef Blue Clearcoat Metallic	■			■
Silver Clearcoat Metallic	■		■	■

Note: White/Opal Grey, White/Ruby Red interiors are available with convertible. See your dealer for exterior/interior combinations.

PRODUCT CHANGES

Following publication of the catalog, certain changes in standard equipment, options, prices and the like, or product delays, may have occurred which would not be included in these pages. Your Ford Dealer is your best source for up-to-date information.

Ford Division reserves the right to change product specifications at any time without incurring obligations.

BUMPER-TO-BUMPER COVERAGE

The 36-month/36,000-mile bumper-to-bumper coverage of Ford's new vehicle limited warranty covers the complete vehicle (except tires, battery, service adjustments and other items covered under separate provisions) against defects in factory-supplied materials or workmanship. For complete information, see your Ford Dealer.



Optional Ford Extended Service Plans can cover major components on new Ford cars and light trucks for longer than the vehicle's basic warranty. Your dealer has full details.

SPECIFY GENUINE FORD COLLISION REPAIR PARTS

Genuine Ford sheet metal and plastic replacement collision parts, such as hood, doors, fenders and bumper components, are the right choice — and for all the right reasons. Genuine Ford parts are equal to original parts in fit, finish, structural integrity and corrosion protection. Ford parts are the same as those used on new vehicles which are certified to meet all Federal Motor Vehicle Safety Standards. And all Ford sheet metal parts are covered by the exclusive Ford Lifelong Sheet Metal Guarantee. Ask your dealer to see a copy of this limited warranty. Don't settle for imitations. Ask your insurer to authorize genuine Ford collision parts.



Ford Credit offers advantageous financing and leasing arrangements for qualified customers, plus the convenience of making them right where you buy or lease your car — at your Ford Dealer.

OPTIONS AVAILABILITY

Options shown or described in this catalog are available at extra cost and may be offered only in combination with other options or subject to additional ordering requirements or limitations.

