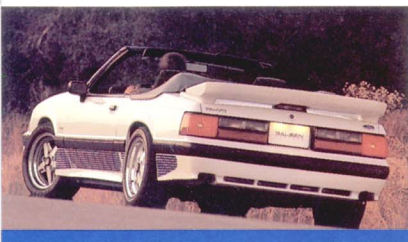


SALEEN MUSTANG

POWER IN THE HANDS OF A FEW

THE LIMITED EDITION SALEEN MUSTANG. WHEN YOU GET SERIOUS ABOUT PERFORMANCE.

The 1989 Limited Edition Saleen Mustang is a unique blend of purposeful styling, advanced suspension develop-



ment and race-proven drivetrain. Its competition-derived urethane front spoiler,

side skirts, rear valance and rear wing complement both appearance and handling. Shorter, firmer springs plus specially valved Monroe Formula GP gas shock absorbers provide the sure feeling of a race car. Urethane pivot bushings and stress point chassis bracing enhance structural integrity. Big Ford SVO 4-wheel disc brakes and five-bolt hubs supply sure stopping power. Saleen/American Racing alloy wheels, 16" x 7" fronts and 16" x 8" rears, with P225/50 VR16 General XP2000V tires provide a wide stance and high adhesion footprint.

The high output OHV fuel-injected 302ci Ford V8 delivers



power, torque and Ford Factory Warranty-backed reliability. A Borg-Warner T-5 five speed transmission and Hurst shifter handle this horsepower and get it to the road with tremendous response through each close-ratioed gear change.

Aerodynamics, handling, stopping, horsepower — all the performance ingredients are



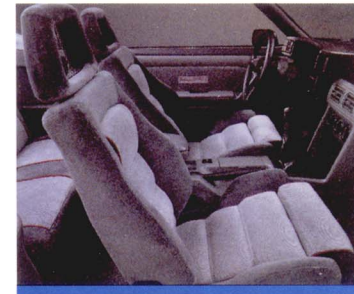
there in the new Saleen Mustang. Integrated and balanced to create a very special vehicle of true racing capability. And inside this remarkable machine the quality continues. Saleen edition FloFit sport seats with their body molded contours and lumbar adjustment support



and fit you perfectly. The three-spoke leather covered Momo steering wheel reflects its racing

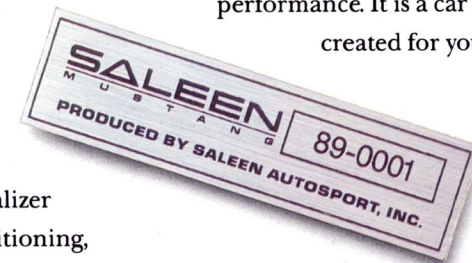
heritage in optimum size and grip. A 170MPH speedometer and quick reading tachometer, both Saleen-designed, are right where you want them for instant input. The leather covered shift knob, the pedal positions, the driver's foot rest — clearly, this is a car to be driven.

The Saleen Mustang is also a car to be driven with all the comfort and sensual pleasure befitting a refined touring automobile. Concert hall sound surrounds you through the enclosure-engineered magic of a Pioneer KEH 8050 4-channel, 6-speaker, 80 watt stereo cassette system with graphic equalizer and remote. Air-conditioning,



cruise control, power windows, remote controlled mirrors — all the amenities you'd expect in a car of this caliber are there and waiting for you.

The 1989 Saleen Mustang is a car created for the knowing enthusiast who is serious about performance. It is a car created for you!



GENERAL

Curb Weight, lb.	2782
Weight Distribution (w/Driver), F/R	59/41
Fuel Capacity, Gal.	15.8
Wheelbase, In.	101
Width	69.1
Height	50.0

ENGINE

Type	HO, OHV 90-Degree V8
Bore & Stroke	4.00x3.00-inch
Displacement	5.0L, 302-cid
Compression Ratio	9.5:1
Induction System	Sequential Electronic Fuel-Injection
Exhaust System	Stainless Steel Tubular Headers with Dual Exhaust 2 1/4" in. Pipes, Dual Low-Restriction Mufflers
Camshaft	Hydraulic Roller Tappet Design
Horsepower	225 @ 4000 rpm
Torque	300 @ 3200 rpm

DRIVETRAIN

Transmission	5-SPD Manual, Borg Warner T5
Final Drive Ratio	3.08

SUSPENSION

Front	Hybrid MacPherson Strut with Monroe Formula GP Gas Inserts and specific rate Springs on Lower Control Arms, 1.31-inch Stabilizer Bar with Urethane Pivot Bushings and Strut Tower Brace. Calibrated suspension setting.
Rear	Four Bar Link with specific rate Coil Springs on Lower Arms, 830 Stabilizer Bar, Quadra Shock system with vertical Monroe Formula GP Gas shocks and Monroe Horizontal Axle Dampers.
Wheels	SALEEN/AMERICAN RACING design alloy 16" x 7" / 16" x 8"
Tires	General XP2000V P225/50 VR-16

PERFORMANCE

0-60	6.0 seconds
Quarter-Mile	14.50 @ 95 MPH
Max. Lateral Acceleration	0.88G
Braking From 60-0/145 Ft.; 30-0/36 Ft.	
Top Speed	149 MPH

RACECRAFT SUSPENSION

Specific Rate Front and Rear Coil Springs
Monroe Formula GP Gas Front Struts
Special Strut Mounting Bearings
Monroe Formula GP Gas Rear Shocks
Monroe Horizontal Axle Damper
Urethane Sway Bar Pivot Bushing
SALEEN/AMERICAN RACING Design Alloy Wheels 16" x 7" Front, 16" x 8" Rear
General XP2000V Tires, P225/50 VR16

High Performance Alignment & Tuned Chassis

PERFORMANCE ENHANCEMENTS

Four Wheel SVO Type Disc Brakes
Strut Tower Brace, Racecraft Chassis Bracing
Heavy Duty Cooling System (opt.)
Panhard Rod (opt.)

5 Lug Bolt Pattern

Straight Dual Exhaust Pipes

Hurst Quick Ratio Shifter

3.27; 3.55 Traction LOC Differential (opt.)

AERODYNAMICS

Saleen AutoSport Competition Design Rear Wing
Saleen AutoSport Edition Front Air Dam and Side Skirts (Urethane)
Saleen AutoSport Edition Ground Effects Rear Valance (Urethane)

STYLING AND INTERIOR

170 MPH Saleen Speedometer
Electronic Saleen Tachometer
Cruise Control
Leather covered Shift Knob
3 Spoke Leather Covered MOMO Steering Wheel

Pioneer Cassette/Radio with 6 Speakers, 80 Watts, 4 Channels, with Remote

Pioneer Graphic Equalizer

Saleen Edition FloFit Sport Seats, with Lumbar Support

Matching Rear Seat & Door Panels

Left Side Driver's Foot Rest

Saleen Mustang Windshield Graphic

Saleen Mustang Deck Lid Graphic

Saleen Mustang Racing Stripes

Saleen Mustang Dash Emblem

Front Bumper Moulding

Serialization Numbers, Front

Serialization Console Plaque, Etched Metal Finish

Serialization Engine Compartment I.D.

Saleen Mustang Racing Jacket

EXTERIOR COLORS

Black with Silver Graphics

Black with Gold Graphics

White with Blue Graphics

White with Silver Graphics

Bright Red with Silver Graphics

Bright Red with Gold Graphics

Deep Shadow Blue Metallic with Silver Graphics

INTERIOR COLORS

Charcoal Grey

Sand Beige



Ultra high performance 16" alloy wheels with VR rated General radial tires (Basket Weave style optional)



Four-Wheel Disc Brakes With Five Lug Bolt Pattern

Parts and Accessories Available Individually. Please Call Saleen Autosport High Performance Parts Division (714) 777-0464



**POWER IN
THE HANDS
OF A FEW**

SALEEN AUTOSPORT
4955 East Hunter Ave.
Anaheim, CA 92807
(714) 777-1033