

2012 **MUSTANG**



Drive one.

Thank you for your interest in the 2012 Ford Mustang. Included in this brochure you'll find information about:

PERFORMANCE: Power and torque. Mustang serves up both – from a 305 HP, 31 MPG V6 to the 5.0L V8 that pumps out a smoking 412 horsepower (achieved with premium fuel) and 390 lb.-ft. of torque. And all engines are mated to six-speed transmissions.

DESIGN: The original Pony car. It features a Pony grille, “hockey stick” sidelines and hop-up into the rear haunch to the three-bar taillamps that make the 2012 Mustang appear ready to leap into action. One look and you know – this car means business.

TECHNOLOGY: The 2012 Mustang has 12 class-exclusive features (class is Sports Cars vs. 2011 competition). Innovative features such as MyKey®, available Navigation System with integrated Sirius Traffic™ and Sirius Travel Link™ and available SYNC®.

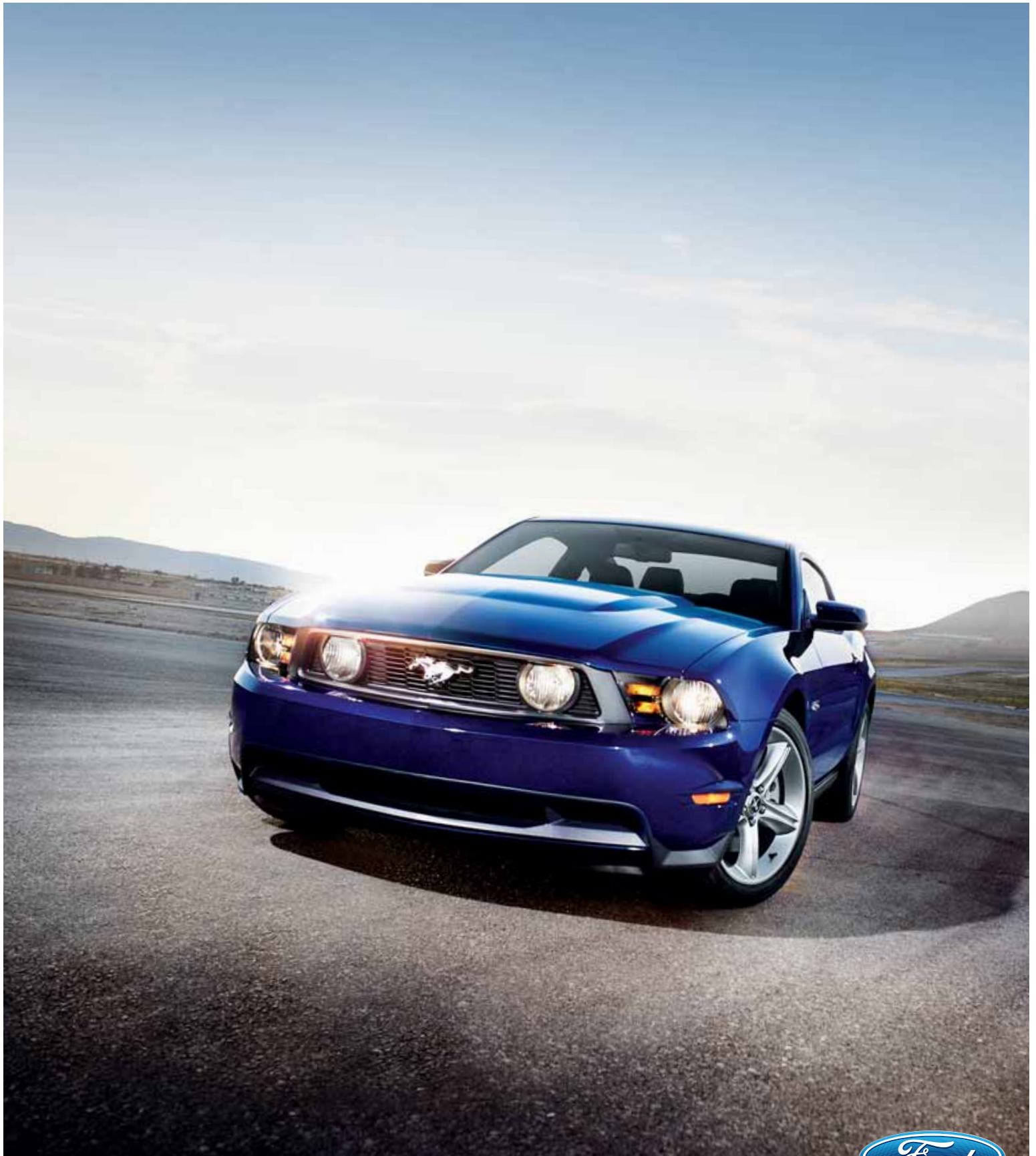
INTERIOR: Sporty inside and out. V6 and GT Premium models have a leather-wrapped steering wheel with brushed aluminum spokes and bright aluminum accents on the dash and pedal covers. For a totally arresting look, leather-trimmed Black seats with Lava Red inserts are available.

Dealer Information: Find up-to-date contact information for your local Ford dealer. To visit a local dealer Web site and view a map of their location, click on one of the links below.

Shawnee Mission Ford Inc	11501 W. Shawnee Mission Pkwy. (913) 631-0000 Shawnee, KS 66203	
Metro Ford, Inc.	2860 S. Noland Road Independence, MO 64055	(816) 254-9800
Thoroughbred Ford	I-29 at Barry Road Kansas City, MO 64154	(816) 505-1818
Dick Smith Ford, Inc.	9505 East Hwy 350 Raytown, MO 64133	(816) 353-1495

owner web site. It's a one-stop spot for managing important vehicle information – 24/7, whenever you need it. It's free to register for personalized maintenance schedules, incentives and offers, and much more. You can even access your Ford Credit information and online bill payment services. Log on to www.myford.fordvehicles.com to get started.

2012 **MUSTANG**



Drive one.

THE FAMILY THAT SLAYS TOGETHER.



This All-American family of 4 remains close by sharing a single passion: destroying the competition. Turning laps at Laguna Seca, holeshotting the strip a quarter mile at a time, or measuring elapsed time home from work, there's a horse for every course. This year more than ever. V6 sports 305 horsepower. GT checks in with 412.¹ And the Boss®? Well he's back and particularly angry. Throw in the GT500,² 6 speeds for everybody and best-in-class fuel economy,² and you have the finest stable of Mustangs ever. Drive one. Drive them all.

Left to right: Mustang GT Premium. Ingot Silver Metallic. Available equipment. ■ Shelby GT500™ Ingot Silver Metallic. ■ V6 Premium. Ingot Silver Metallic. Mustang Club of America Edition. ■ Boss 302. Ingot Silver Metallic. Laguna Seca Package.



¹Figures achieved using premium unleaded fuel. ²EPA-estimated 19 city/31 hwy/23 combined mpg. Coupe automatic. Class is V6 and V8 Sports Cars. Apple and the Apple logo are trademarks of Apple Inc., registered in the U.S. and other countries. iPad is a trademark of Apple Inc. App Store is a service mark of Apple Inc.



Drive one.

2012 **MUSTANG** ford.com

A collage of 15 images showcasing the Ford Mustang SVT Raptor. The images include exterior views of the blue truck in motion and parked, close-ups of the '5.0' and 'SVT Raptor' badges, the interior dashboard with 'BOSS 302' and 'SVT' branding, and the iconic Ford Mustang horse logo on the grille.



THIS BOSS HAS A ONE TRACK MIND.



The legendary Boss® 302 is back. And with a 444-hp, quad-exhaust Hi-Po 302 engine, it really loves its work. Literally born on the racetrack, Boss 302 Laguna Seca overflows with performance upgrades. It starts with engine modifications and goes forever. Rear seat delete with cross-car X-brace. Brake cooling ducts. Front air splitter.¹ TORSEN® limited-slip differential with 3.73:1 gear ratio. Unique suspension, steering, tuning and calibration. 5-way adjustable shocks. 3-gauge pack to monitor fluid temps and performance stats. RECARO® seats. Staggered, painted aluminum wheels with R-compound tires. The list goes on and on, and so does the winning. Once you get it on the track, like any outstanding boss, it demands respect.

Boss 302. Black. Laguna Seca Package. Available equipment.



Drive one.

¹Front air splitter included in Laguna Seca Package is intended for racetrack use only and is not legal for on-street driving. May degrade crash performance and void vehicle warranty. Must be installed by customer.

2012 **MUSTANG** ford.com

ANTHOLOGY OF TECHNOLOGY.



How do you produce outstanding horsepower and fuel economy in every engine across the line? Start with one passionate development team and some of the industry's most advanced powertrain technologies. Our engineers, each a Mustang enthusiast, brought different innovations to the party to produce these already-legendary powerplants.

Twin independent variable camshaft timing, cast-aluminum engine blocks, cold air induction, dual overhead cams and cylinder heads optimized for airflow are just a few of the ways we deliver more power, more low-end torque and more fuel economy. Pick your Mustang, and open up the hood, or the throttle, on an honest-to-badness technological masterpiece.

3.7L V6

The all-aluminum 3.7L V6 is the first engine to deliver 305 horsepower and up to 31 mpg hwy.¹ A DOHC design with Ti-VCT technology, it uses 2 camshafts per cylinder bank. Intake and exhaust cams can be advanced independently of each other, providing exceptional valve timing control. This helps eliminate induction and exhaust compromises, and allows the engine to deliver key benefits including low-end torque, peak horsepower, increased fuel economy and reduced emissions.

5.0L V8

"We have to hit 400 horses." The goal for the 5.0L development team was clear. As with the V6, Ti-VCT technology was instrumental in hitting that mark, but there's much more to it than that. Cylinder heads were optimized and a new intake manifold was designed to bring more air into the engine. A high-energy coil-on-plug ignition was selected for more efficient combustion. Piston cooling jets were designed to cool the engine back down and maintain reliability. And tubular exhaust headers were fabricated to produce more power. The result: a goal-clearing 412 hp.²

Boss® 302

To build an engine worthy of the Boss name, the powertrain team started with GT's 5.0L as a baseline, then got to work. Every component was analyzed, then modified to make sure the Boss 302 could withstand all-day thrashing all the way up to its 7,500 rpm redline. Improvements abound, including forged-aluminum pistons, upgraded connecting rods, revised oil pan baffling and much more. Without the benefit of a supercharger, the Boss delivers 444 hp and 380 lb.-ft. of torque, plus all the reliability of a Mustang GT.



¹EPA-estimated 19 city/31 hwy/23 combined mpg, Coupe automatic. ²Figures achieved using premium unleaded fuel.



A VISCERAL THRILL RIDE.

With a jaw-dropping 412 hp¹ and 390 lb.-ft. of torque,¹ GT turns green lights into green flags, and rips any lane into your personal victory lane. With one stomp of your right foot, the already-legendary Ti-VCT 5.0L V8 responds immediately, delivering usable power throughout the torque curve. An upgraded suspension, larger stabilizer bars and electronic power-assisted steering help you make the most of GT's power, both literally and laterally. Other highlights include an optimized 6-speed transmission and class-best 26 mpg hwy.² The available Brembo™ Brake Package delivers 14" front rotors, unique 19" wheels and electronic stability control tuning.

GT Premium. Red Candy Metallic Tinted Clearcoat. Available equipment.

¹Figures achieved using premium unleaded fuel. ²EPA-estimated 17 city/26 hwy/20 combined mpg, V8 manual.



Drive one.

GRAB THE ROAD. RELEASE THE HORSES.

It's one thing to generate serious horsepower and torque; it's quite another getting it all to the ground. Every 2012 Mustang does. And that's just the beginning. Not only do they go hard, they turn and stop exceptionally. From the Boss® 302 all the way across the line, every model has been independently tuned, so you'll be sure to find your ideal Mustang. From comfortable and fuel-efficient, up to corner-carving and race-winning.



Go.

To turn horsepower into forward motion, every Mustang comes equipped with AdvanceTrac® electronic stability control! AdvanceTrac monitors vehicle speed, throttle position and steering wheel angle and, if necessary in slippery conditions, reduces engine torque and applies the brakes as needed. Select the Sport setting to push your Mustang to its limits while still retaining control. You can also turn AdvanceTrac off completely.

Turn.

To properly dial in every Mustang, suspension testing and tuning was performed at racetracks around the country during model development. On average, up to 7 separate test drivers were utilized at each track to provide feedback and expertise. Suspension components were selected specifically for each model. So no matter which Mustang you choose, you'll find the right balance of handling, steering and cornering ability.

Stop.

To improve Mustang braking performance, V6 and GT are equipped with unique brakes and rotors, while the available Brembo™ Brake Package includes 14" Brembo vented front rotors with Brembo 4-piston calipers. Boss 302 with available Laguna Seca Package gets front brake cooling ducts and low-expansion brake lines. Even when stopping, Mustang does it quickly.



Drive one.

¹Remember that even advanced technology cannot overcome the laws of physics. It's always possible to lose control of a vehicle due to inappropriate driver input for the conditions.

2012 **MUSTANG** ford.com

305 HORSES. 31 MPG HWY.¹ ONE TRUE MUSTANG.



Armed with 305 horses, available V6 Performance Package and track-ready DNA, Mustang V6 is truly worthy of the Mustang name. With a class-leading 31 mpg hwy,¹ it's ready for anything – be it a sprint or a marathon. Fire up the all-aluminum, dual-overhead-cam 3.7L engine with Ti-VCT, and one thing that's sure to race is your heart rate. Twin independent variable camshaft timing means maximum acceleration through all 6 gears and the X-pipe dual exhaust strikes just the right tone. In every way, the most powerful Mustang V6 ever produced is one true Mustang.

V6 Premium. Ingot Silver Metallic. Mustang Club of America Edition.



¹EPA-estimated 19 city/31 hwy/23 combined mpg, Coupe automatic.



HIGH TECH. HIGH STYLE.

Inside Mustang Premium's interior, high-tech features abound, including programmable MyKey®, Ford SYNC®, and MyColor® with 125 combinations of driver-variable hues for gauges. High style is obvious from the moment you slide into the premium leather-trimmed front bucket seats. From the seamless, soft-touch instrument panel to the available aluminum accents and impressive center stack, Mustang's interior resembles the cockpit of a private jet. Now prepare for takeoff.

GT Premium. Charcoal Black leather trim. Available equipment.



Drive one.



550 HP. NO ANTIDOTE.

With a supercharged and intercooled 5.4L 32-valve V8 engine, this snake does its own charming. Unless, of course, you're lined up against it on the track. The most powerful and responsive GT500® ever features a cast-aluminum engine block and produces 550 horsepower and 510 lb.-ft. of torque. The available SVT Performance Package delivers a 3.73:1 gear ratio with limited-slip differential; exclusive front and rear springs, rear shocks and shift knob; Shelby stripes; spoiler with unique Gurney flap; and much more. In every way, the Shelby GT500™ is a performance icon worthy of the Carroll Shelby name.

Shelby GT500. Black.



Drive one.

YOUR RACE CONTROL TOWER.

SYNC
POWERED BY Microsoft

SiriusXM
SATELLITE RADIO



On the track, races are won with quality information and clear communication. They have nothing on you and your Mustang. With Ford SYNC^{®1} voice-activated Navigation System with Sirius Traffic[™] and Sirius Travel Link^{™1} and Sirius[®] Satellite Radio¹ on board, you have everything you need for a successful trip.

Award-winning SYNC^{1,2} works with your paired Bluetooth[®]-enabled mobile phone and digital media player or USB drive. Delivers hands-free calling. Plays your music. All with the touch of a button and voice commands.³ The system also features 911 Assist.[™] Personalized traffic reports.³ Turn-by-turn driving directions.³ Business searches. News. Sports. Weather.³ Vehicle Health Reports. And even incoming text messages read aloud.

Voice-activated Navigation System¹ with Sirius Traffic and Sirius Travel Link^{1,4} The 8" LCD touch screen displays real-time traffic reports. Weather. Lowest fuel prices. Sports scores. And movie listings. Bonus: This system also has nearly 10 GB of storage space for your photos and music (up to 2,400 songs).

Sirius Satellite Radio¹ comes with a 6-month introductory subscription.⁵ Surf more than 130 channels – including 100% commercial-free music. Plus the best of sports, news, talk and entertainment, coast-to-coast.

GT Premium. Available equipment.

¹Available. ²Driving while distracted can result in loss of vehicle control. Only use mobile phones and other devices, even with voice commands, when it is safe to do so. ³These SYNC services not available with optional Navigation System. Traffic reports available in select markets. See your dealer for details. ⁴Turn-by-turn directions and traffic alerts available in select markets. Standard text messaging and data rates apply. ⁵Subscription required after introductory 6 months expire.



Drive one.

2012 **MUSTANG** ford.com



EVEN RACE THE CLOUDS.

Get a little sun on the interior and you start to feel like you can take on anything. With Mustang convertible, maximum performance merges with maximum open-air freedom. Drop the top on a whole new world where the rush is exceedingly more spectacular. Or go with the glass roof for all-season views – rain or shine. Either way, the race-ready feeling will never leave you.

	Coupe	Convertible	Glass Roof
V6	●	●	
V6 Premium	●	●	●
GT	●	●	
GT Premium	●	●	●
Boss® 302	●		
Shelby GT500™	●	●	●

GT Premium. Ingot Silver Metallic. Glass roof. California Special Edition.
GT Premium. Race Red. Convertible. Shown with optional Genuine Ford Accessories.



Drive one.

2012 **MUSTANG** ford.com

THE THRILLS KEEP COMING.



From standard features like sequential LED taillamps, MyKey® and Easy Fuel® capless fuel filler to available features including Reverse Sensing System, voice-activated Navigation System and rear view camera, it's safe to say you'll easily win the features race. With so many possibilities, you can make your Mustang as infinitely unique as a snowflake. A fast, angry snowflake.

Ambient lighting¹
 Glass roof¹
 MyKey owner controls feature
 Heated seats¹
 Reverse Sensing System¹
 Integrated blind spot mirrors
 HD Radio™¹
 HID headlamps
 Shaker™ 1000 Audio System¹
 Selectable-effort electronic power-assisted steering
 Rear view camera¹



¹Available.

THRILL OF VICTORY? STANDARD.



Every Mustang comes equipped with race-winning DNA as standard equipment. Born to race and raised to win, Mustang has been defeating domestics and exotics for 45 years and counting. Continually.

To get more speed, more handling and ultimately, more checkered flags, turn to Ford Racing for performance parts. From performance powertrain calibrations, complete supercharger systems and handling packs to complete turn-key race cars like the Super Cobra Jet, we have everything you need to keep your Mustang out front.



DIAL IT IN.



For a comprehensive selection of performance parts, visit fordracingparts.com.

Performance

Superchargers
Brakes
Suspension
Exhaust
Driveline
Chassis
Electrical
Air intake and more

Racing Packs

Power Upgrade
Handling Pack
Super Pack

Appearance

Ford Racing logo graphics

Interior

Ford Racing logo illuminated sill plates
Ford Racing logo floor mats





All-weather floor mats
 Illuminated door sill plates
 Illuminated gear indicator shift knob by Gaslock®¹
 Decklid panel and pedestal-mount spoiler
 V6 in Ingot Silver Metallic shown with billet-style grille insert, hood scoop, 20" chrome wheels, quarter window louvers, side scoops, rear lip spoiler

Appearance
 Body kits
 Graphics kits
 Hood and side scoops
 Quarter window louvers
 Rear spoilers and decklid panels
 Grille surrounds and inserts

Electronics
 Navigation systems¹
 Remote start systems
 Vehicle security systems
 Park assist systems¹
Exterior
 Hood and side window deflectors
 Splash guards
 Convertible tonneau cover¹
 Front-end and vehicle covers

Interior
 Cargo organizers and protectors
 Carpeted floor mats
 Sport pedals
 Auto-dimming rearview mirror
 Ash cup/coin holder

Wheels
 20" chrome wheels
 19" Foundry Black-painted GT wheels
 18" Dark Shadow Gray-painted wheels
 18" 5-spoke chrome wheels
 Wheel lock kit

custom
 accessories 

¹Ford Licensed Accessories.

MUSTANG Standard Features



Mechanical

4-wheel disc Anti-Lock Brake System (ABS)

All-speed traction control

Coil-over strut front suspension

Coil spring 3-link solid-axle rear suspension

Front and rear stabilizer bars

Selectable-effort electronic power-assisted steering (Standard, Comfort, Sport)

Seating

4-way manually adjustable driver's bucket seat with height adjustment

2-way manually adjustable front-passenger bucket seat

50/50 split-fold rear seat (coupe only)

Interior

4-gauge instrument cluster with chrome accents

Air conditioning

Auxiliary audio input jack

Carpeted front floor mats in Charcoal Black

Cruise control

Full center floor console with armrest and locking storage

Ice Blue™ Lighting

Message center

Power door locks

Power windows with one-touch-up/-down feature

Powerpoints (2)

Premium AM/FM stereo/single-CD audio system

Sun visors with multipurpose storage system and illuminated vanity mirrors

Tilt steering column

Exterior

Complex-reflector halogen headlamps

Easy Fuel® capless fuel filler

Rear-window defroster

Sequential light-emitting diode (LED) taillamps

Variable-interval windshield wipers

Safety & Security

Personal Safety System™ with dual-stage front airbags¹

AdvanceTrac® electronic stability control

Belt-Minder® front safety belt reminder

Front-seat side airbags¹

Illuminated Entry System

LATCH – Lower Anchors and Tethers for Children

MyKey® owner controls feature

Remote Keyless Entry System with integrated keyhead transmitter remotes (2)

Safety belt restraint system – Manual 3-point shoulder and lap safety belt system for all seating positions

SecuriLock® Passive Anti-Theft System

SOS Post-Crash Alert System™

Tire Pressure Monitoring System (excludes spare)

V6

Equipment Group 100A

Includes all standard features, plus:

Mechanical

3.7L Ti-VCT V6 engine with 305 hp @ 6,500 rpm and 280 lb.-ft. of torque @ 4,250 rpm

6-speed manual transmission

2.73:1 gear ratio with limited-slip rear differential

Tire mobility kit

Exterior

17" painted aluminum wheels

Black power sideview mirrors with integrated blind spot mirrors

Stainless steel dual exhaust tips

Vinyl top on convertible

V6 Premium

Equipment Group 200A

Includes select V6 features, plus:

Seating

6-way power driver's seat with power lumbar

Leather-trimmed front bucket seats

Interior

6-gauge cluster with MyColor® illumination

Ambient lighting

Auto-dimming rearview mirror

Bright-aluminum instrument panel, pedal covers, door-sill scuff plates and shift knob

Bright-chrome door speaker surrounds

Ford SYNC® voice-activated, in-vehicle connectivity system

Leather-wrapped steering wheel with aluminum spokes

Shaker™ 500 Audio System with AM/FM stereo/single-CD player with MP3 capability, 8 speakers and 500 watts

Sirius Satellite Radio with 6-month introductory subscription

Universal garage door opener

Vinyl door-trim panel inserts

Exterior

17" machined aluminum wheels with painted pockets

EPA-Estimated Fuel Economy

3.7L Ti-VCT V6 engine

Manual 19 city/29 hwy/22 combined mpg Automatic 19 city/31 hwy²/23 combined mpg

5.0L Ti-VCT V8 engine

Manual 17 city/26 hwy/20 combined mpg Automatic 18 city/25 hwy/20 combined mpg

5.0L Hi-Po Ti-VCT V8 engine

Manual 17 city/26 hwy/20 combined mpg

5.4L DOHC V8 engine

Manual 15 city/23 hwy/17 combined mpg



Drive one.

¹Always wear your safety belt and secure children in the rear seat. ²Coupe only. 30 mpg hwy for convertible.

MUSTANG Standard Features



GT

Equipment Group 300A
Includes all standard features, plus:

Mechanical

5.0L Ti-VCT V8 engine with 412 hp @ 6,500 rpm¹ and 390 lb.-ft. of torque @ 4,250 rpm¹

6-speed manual transmission

3.31:1 gear ratio with limited-slip rear differential

Compact spare tire

Exterior

18" wide-spoke painted aluminum wheels

Automatic headlamps

Body-color power sideview mirrors with integrated blind spot mirrors

Bright rolled dual exhaust tips

Dark-chrome Pony badge located in grille

Fog lamps

Rear spoiler

Vinyl top on convertible



GT Premium

Equipment Group 400A
Includes select GT features, plus:

Seating

6-way power driver's seat with power lumbar

Leather-trimmed front bucket seats

Interior

6-gauge cluster with MyColor® illumination

Ambient lighting

Auto-dimming rearview mirror

Bright-aluminum instrument panel, pedal covers, door-sill scuff plates and shift knob

Bright-chrome door speaker surrounds

Leather-wrapped steering wheel with aluminum spokes

Shaker™ 500 Audio System with AM/FM stereo/single-CD player with MP3 capability, 8 speakers and 500 watts

Sirius Satellite Radio with 6-month introductory subscription

SYNC®

Universal garage door opener

Vinyl door-trim panel inserts

Exterior

Cloth top on convertible

Soft boot for convertible top



Boss® 302

Equipment Group 500A
Includes select GT features, plus:

Mechanical

5.0L high-output Ti-VCT V8 engine with 444 hp @ 7,400 rpm and 380 lb.-ft. of torque @ 4,500 rpm

6-speed manual transmission

3.73:1 gear ratio with limited-slip rear differential

Adjustable shocks/struts with 5 settings

Unique front and rear springs

25-mm rear stabilizer bar

Brembo™ 14" vented front rotors and 4-piston calipers

11.8" vented rear rotors with high-performance pad compound

Quad exhaust with 2 side and 2 rear outlets

Unique intake manifold with production number plate

Seating

Charcoal Black cloth front bucket seats with gray embroidered "BOSS 302" logo; 4-way manually adjustable

Interior

Alcantara® suede-wrapped steering wheel

Black cue ball-style shift knob

Dark-aluminum instrument panel appliqué

Unique gauge cluster

Exterior

19" x 9" front and 19" x 9.5" rear black-painted aluminum wheels with 255/40R Z-rated front and 285/35R Z-rated rear max-performance Pirelli™ P Zero™ summer-only tires

Black decklid stripe

Grille with blocked-off fog lamp openings

Modified front fascia with lower chin splitter

Painted roof in Black or White to match stripes

Unique hood stripe and reverse "C" side stripes

Black rear spoiler



Shelby GT500™

Equipment Group 820A
Includes select GT Premium features, plus:

Mechanical

5.4L DOHC 32-valve V8 engine with 550 hp @ 6,200 rpm and 510 lb.-ft. of torque @ 4,250 rpm

6-speed manual transmission

9.0 psi boost

3.55:1 gear ratio with limited-slip rear differential

Brembo 14" vented front rotors with 4-piston calipers

Forged-steel crankshaft and connecting rods
SVT-tuned suspension with unique shocks and springs

Tuned stainless steel H-pipe exhaust with 4" tips

Seating

Leather-trimmed front sport bucket seats with racing stripes and Alcantara suede trim

Interior

Leather-wrapped steering wheel with Alcantara suede trim

Message center with compass

Exterior

19" x 9.5" painted forged aluminum wheels with Goodyear® Eagle® F1 Supercar tires

GT500® badging

GT500 side rocker stripes

HID headlamps with autolamp

Le Mans racing stripes

Power dome hood with heat extractor

Unique rear spoiler

Exterior Dimensions ²	Coupe/Convertible
Wheelbase	107.1"
Length	188.1"
Height	55.8"
Width – Excluding mirrors	73.9"
Width – Including mirrors	80.1"

Front Interior Dimensions ²	Coupe/Convertible
Head room	38.5"/38.8"
Shoulder room	55.3"
Leg room	42.4"
Rear Interior Dimensions ²	Coupe/Convertible
Head room	34.7"/36.5"
Shoulder room	51.6"/45.0"
Leg room	29.8"

Capacities ² (cu. ft.)	Coupe/Convertible
Passenger volume	83.3/81.0
Luggage capacity	13.4/9.6
Total interior volume	96.7/90.6
Fuel capacity (gal.)	16.0

¹Figures achieved using premium unleaded fuel. ²Dimensions based on V6 and GT models. For Boss 302 and Shelby GT500 dimensions, see your dealer.

Shelby and GT500 are registered trademarks of Carroll Hall Shelby Trust. Front air splitter included in Laguna Seca Package is intended for racetrack use only and is not legal for on-street driving. May degrade crash performance and void vehicle warranty. Must be installed by customer. TORSEN is a registered trademark of JTEKT Corporation. RECARO is a registered trademark of RECARO Beteiligungs-GmbH. Brembo is a trademark of Brembo S.p.A. Subscriptions governed by Sirius Terms and Conditions available at sirius.com. Service available in the 48 contiguous United States and D.C. Sirius, XM and all related marks and logos are trademarks of Sirius XM Radio Inc. and its subsidiaries. The Bluetooth word mark is a trademark of the Bluetooth SIG, Inc. Microsoft is a registered trademark of Microsoft Corporation. HD Radio is a proprietary trademark of iBiquity Digital Corp. Alcantara is a registered trademark of Alcantara S.p.A., Italy. Pirelli is a trademark of Pirelli & C. S.p.A. Goodyear is a registered trademark of The Goodyear Tire & Rubber Company. Garmin is a registered trademark of Garmin Ltd. SmartAlert is a registered trademark of Inilex, Inc.





V6

Available Equipment Groups

Equipment Group 101A – **Exterior Appearance Package** includes lower bodyside tape stripes and rear spoiler

Available Options & Packages

3.3l:1 gear ratio with limited-slip rear differential (coupe only)

6-speed automatic transmission

Reverse Sensing System & Security Package includes Reverse Sensing System, Active Anti-Theft System and wheel locks

V6 Performance Package includes GT Coupe suspension, 3.3l:1 gear ratio with limited-slip rear differential, unique electronic stability control tuning, strut-tower brace, unique engine cover, gloss black sideview mirrors, 19" painted machined aluminum wheels and 255/40R19 summer-only tires (manual coupe only; n/a with white stripes or Lava Red exterior)

All-weather floor mats

Hood and side stripes

Over-the-top stripe

Remote start systems (automatic only)



V6 Premium

Available Equipment Groups

Equipment Group 201A – **Exterior Appearance Package** includes lower bodyside tape stripes and rear spoiler

Equipment Group 202A – **V6 Pony Package** includes 18" polished aluminum wheels, satin-chrome grille, body-color sideview mirrors, fog lamps, automatic headlamps, carpeted front floor mats with embroidered Pony logo, lower bodyside tape stripes, and rear spoiler

Equipment Group 203A – **Mustang Club of America Edition** includes dark stainless-painted billet-style grille, lower fascia-mounted fog lamps, unique bodyside satin-black tape stripes, decklid tape appliqué, 18" Sterling Gray Metallic-painted aluminum wheels with P235/50R18 W-rated tires, premium carpeted floor mats, automatic headlamps, and rear spoiler

Available Options & Packages

3.3l:1 gear ratio with limited-slip rear differential (coupe only)

6-speed automatic transmission

Comfort Package includes 6-way power front-passenger seat, and heated front seats

Electronics Package includes dual-zone electronic automatic temperature control; HD Radio™; hard drive-based, voice-activated Navigation System featuring about 10 gigabytes of digital storage for pictures and music; and AM/FM stereo/single-CD/DVD with MP3 capability
Glass roof (coupe only)

HID Headlamps & Security Package includes HID headlamps, Active Anti-Theft System and wheel locks (n/a with Equipment Group 200A or 201A)

Rear view camera (n/a with Equipment Group 200A)

Reverse Sensing System & Security Package

Soft boot for convertible top

Tape stripe delete (n/a with Equipment Group 200A)

V6 Performance Package includes GT Coupe suspension, unique electronic stability control tuning, strut-tower brace, unique engine cover, gloss black sideview mirrors, 19" painted machined aluminum wheels and 255/40R19 summer-only tires (manual coupe only; n/a with white stripes or Equipment Group 202A)

V6 Coupe Package includes side scoops, quarter window louvers and decklid panel

V6 Convertible Package includes side scoops and quarter window louvers

All-weather floor mats

Hood and side stripes

Over-the-top stripe

Remote start systems (automatic only)



GT

Available Options & Packages

3.55:1 gear ratio with limited-slip rear differential (manual coupe only)

3.73:1 gear ratio with limited-slip rear differential (manual coupe only)

6-speed automatic transmission with 3.15:1 gear ratio with limited-slip rear differential

Brembo™ Brake Package includes Brembo 14" vented front rotors with Brembo 4-piston calipers, unique electronic stability control suspension tuning, and 19" dark stainless-painted aluminum wheels with 255/40R19 summer-only performance tires (manual transmission only)

Reverse Sensing System & Security Package

Spoiler delete

GT Coupe Package includes side scoops, quarter window louvers and decklid panel

GT Convertible Package includes side scoops and quarter window louvers

GT Package 4 includes hood scoop and rear pedestal-mount spoiler

GT Coupe Package 5 includes hood scoop, side scoops, quarter window louvers, rear pedestal-mount spoiler and decklid panel

GT Convertible Package 6 includes hood scoop, side scoops, rear pedestal-mount spoiler and decklid panel

All-weather floor mats

Hood and side stripes

Over-the-top stripe

Remote start systems (automatic only)



GT Premium

Available Equipment Groups

Equipment Group 401A – **Premier Trim With Color Accent Package** includes Charcoal Black interior environment with color-accented seats, unique door trim with bright Pony badge, aluminum shift knob and dark-aluminum instrument panel

Equipment Group 402A – **California Special Edition** includes unique billet-style grille with body-color surround, unique lower fascia with fog lamps, 19" argent-painted machined aluminum wheels with P245/45R19 tires, GT/CS side stripes, unique decklid badge with name in faux gas cap, unique instrument panel finish, Carbon door-panel inserts, leather-trimmed front bucket seats with Carbon inserts, premium carpeted front floor mats with embroidered logo, rear lower fascia insert, pedestal rear spoiler, decklid tape appliqué, and side scoops

Available Options & Packages

18" polished aluminum wheels
(n/a with Equipment Group 402A)

19" bright machined aluminum wheels
(n/a with Equipment Group 402A)

19" premium Luster Nickel-painted aluminum wheels
(n/a with Equipment Group 402A)

3.55:1 gear ratio with limited-slip rear differential
(manual coupe)

3.73:1 gear ratio with limited-slip rear differential
(manual coupe)

6-speed automatic transmission with 3.15:1 gear ratio
with limited-slip rear differential

Brembo™ Brake Package (n/a with Equipment Group 402A)

Comfort Package

Electronics Package

Glass roof (coupe only)

HID Headlamps & Security Package

Rear view camera (n/a with Equipment Group 402A)

Reverse Sensing System & Security Package

Shaker™ 1000 Audio System with AM/FM stereo/single-CD
player with MP3 capability, 10 speakers and 1,000 watts
(n/a with Electronics Package)

Spoiler delete (n/a with Equipment Group 402A)

All-weather floor mats

Hood and side stripes

Over-the-top stripe

Remote start systems (automatic only)



Boss® 302

Available Equipment Groups

Equipment Group 501A – **Laguna Seca Package** includes 19" x 9" front and 19" x 10" rear red-painted machined aluminum wheels with Pirelli™ P Zero™ Corsa R-compound competition performance tires; 3.73:1 gear ratio with TORSEN® helical rear differential; unique rear springs and larger stabilizer bar; front brake cooling ducts and front air splitter (installation required); gauge pack with engine temperature, oil pressure and dynamic performance gauges; rear seat delete with red cross-car X-brace; RECARO® Sport cloth bucket seats with red "BOSS 302" embroidered logo; red front grille surround; red roof and mirror caps; and red rear spoiler

Available Options & Packages

RECARO Sport cloth front bucket seats with gray "BOSS 302" embroidered logo, and TORSEN helical differential
(n/a with Equipment Group 402A)

Boss 302 car cover and carpeted floor mats
(includes "BOSS 302" name)



Shelby GT500™

Available Options & Packages

Electronics Package

Glass roof (coupe only)

RECARO Sport leather-trimmed bucket seats

Shaker 1000 Audio System with AM/FM stereo/single-CD
player with MP3 capability, 10 speakers and 1,000 watts
(n/a with Electronics Package or SVT Performance Package)

SVT Performance Package includes 3.73:1 gear ratio with limited-slip rear differential; 19" x 9.5" painted forged-aluminum front wheels with P265/40R19 tires; 20" x 9.5" painted forged-aluminum rear wheels with P285/35R20 tires; unique front and rear springs; unique rear shocks; unique shift knob; unique Shelby stripes; unique bodyside stripes; spoiler with unique Gurney flap; and under-belly aerodynamic shield

Tape stripe delete (standard with Charcoal Black leather-trimmed seats with Black racing stripes)

GT500 car cover

V6/V6 Premium



17" Painted Aluminum
Standard: **V6**



17" Machined Aluminum with Painted Pockets
Standard: **V6 Premium**



18" Polished Aluminum¹
Included: **V6 Premium** Pony Package



18" Sterling Gray Metallic-Painted Aluminum¹
Included: **V6 Premium** Mustang Club of America Edition



19" Painted Machined Aluminum¹
Included: **V6** and **V6 Premium** Performance Packages

GT/GT Premium



18" Wide-Spoke Painted Aluminum
Standard: **GT** and **GT Premium**



18" Polished Aluminum¹
Optional: **GT Premium**



19" Bright Machined Aluminum
Optional: **GT Premium**



19" Premium Luster Nickel-Painted Aluminum
Optional: **GT Premium**



19" Dark Stainless-Painted Aluminum
Included: **GT** and **GT Premium** Brembo™ Brake Packages



19" Argent-Painted Machined Aluminum¹
Included: **GT Premium** California Special Edition

Boss® 302



19" x 9" Front/19" x 9.5" Rear
Black-Painted Aluminum
Standard: **Boss 302**



19" x 9" Front/19" x 10" Rear
Red-Painted Machined Aluminum
Included: **Boss 302** Laguna Seca Package

Shelby GT500™



19" x 9.5" Painted Forged-Aluminum
Standard: **Shelby GT500**



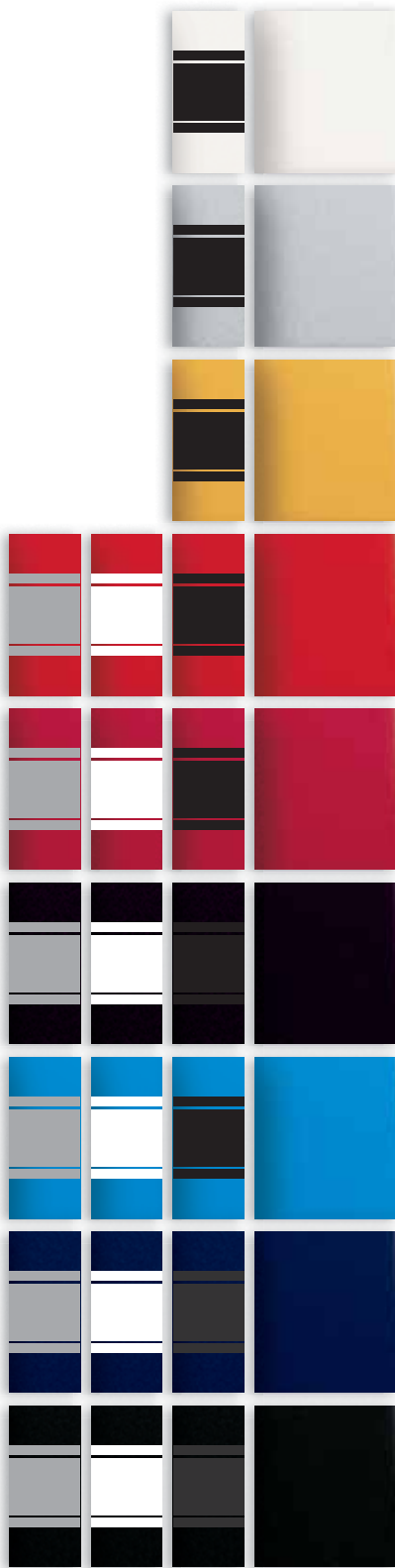
19" x 9.5" Front/20" x 9.5" Rear
Painted Forged-Aluminum
Included: **Shelby GT500** SVT Performance Package

¹Additional finish options available from Ford Custom Accessories.

V6/GT/V6 Premium/GT Premium

Exteriors	Vinyl Convertible Top	
Performance White	●	●
Ingot Silver Metallic	●	
Yellow Blaze Metallic Tri-coat		●
Race Red	●	●
Red Candy Metallic Tinted Clearcoat	●	●
Lava Red Metallic	●	
Grabber Blue	●	
Kona Blue Metallic	●	●
Black	●	●
	● Stone	● Black

Black Cloth Convertible Top
is standard on GT Premium and Shelby GT500.



Silver Stripes are offered on Pony Package only.
Colors are representative only.
See your dealer for actual paint/trim options.



	Interiors									
Exteriors	V6 & GT		V6 Premium			GT Premium				Available on GT Premium
Performance White	1	2	3	4	5	6	3	4	5	6
Ingot Silver Metallic	1	2	3	4	5		3	4	5	
Yellow Blaze Metallic Tri-coat ¹	2		4 ²							
Race Red	1	2	3	4	5		3	4	5	
Red Candy Metallic Tinted Clearcoat ¹	1	2	3	4	5		3	4	5	
Lava Red Metallic	1	2	3	4	5	6	3	4	5	6
Grabber Blue	2		4				4			
Kona Blue Metallic	1	2	3	4	5		3	4	5	
Black	1	2	3	4	5	6	3	4	5	6

⁷ California Special Edition (Black side stripes)

^{8, 9, 10} Premier Trim With Color Accent Package (exterior stripes not available)

¹Additional cost. ²Mustang Club of America Edition only.



Drive one.

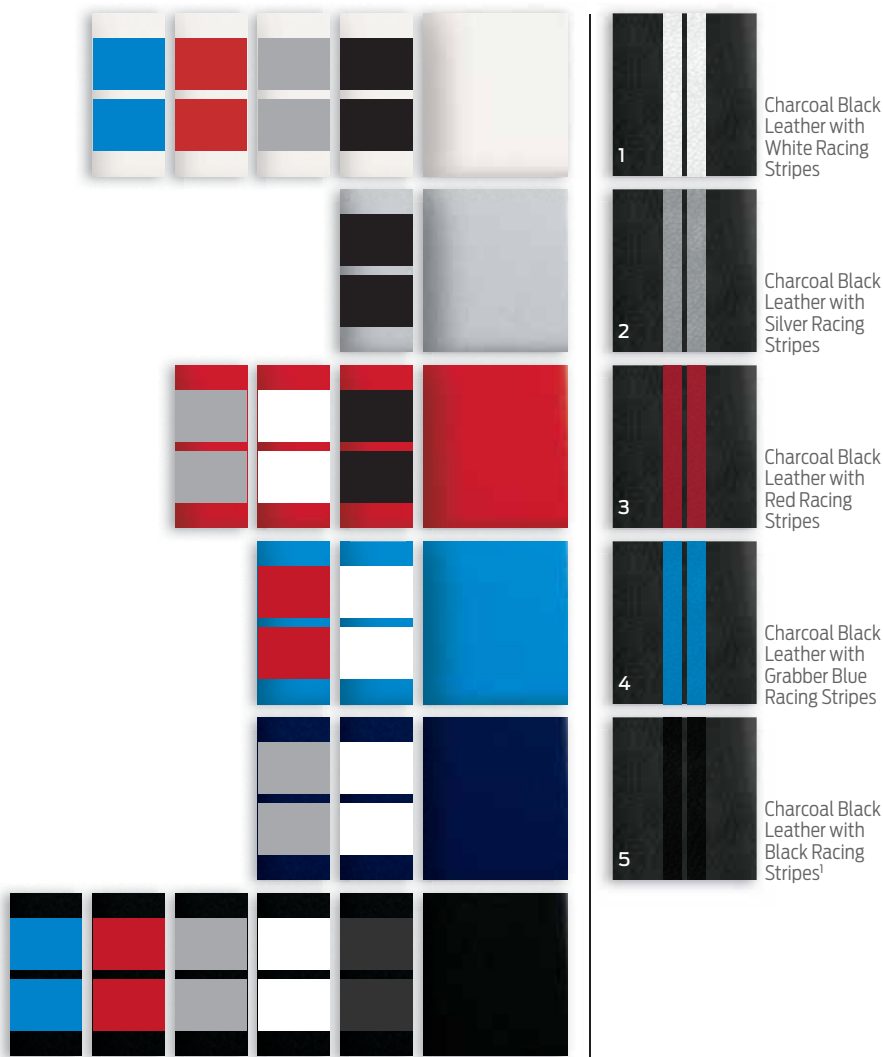
Boss® 302



Exteriors	Interior
Performance White	1
Ingot Silver Metallic ¹	1
Yellow Blaze Metallic Tri-coat ²	1
Competition Orange	1
Race Red	1
Kona Blue Metallic	1
Black ¹	1

¹Ingot Silver and Black exclusive and the only available exterior colors on Laguna Seca Package. ²Additional cost.

Shelby GT500™



SVT Performance Package Stripes



White with Black Accent
on Race Red and Grabber Blue

Red with Black Accent
on Performance White
and Ingot Silver

Red with Silver Accent
on Kona Blue and Black

Exteriors	Interiors				
Performance White	2	3	4	5	
Ingot Silver Metallic				5	
Race Red	1	2		5	
Grabber Blue	1	3			
Kona Blue Metallic	1	2			
Black	1	2	3	4	5

¹Standard with tape stripe delete.



Drive one.



QUALITY, GREEN, SAFE AND SMART.

ford.com

New Vehicle Limited Warranty. We want your Ford Mustang ownership experience to be the best it can be. So under this warranty, your new vehicle comes with 3-year/36,000-mile bumper-to-bumper coverage, 5-year/60,000-mile Powertrain Warranty coverage, 5-year/50,000-mile safety restraint coverage, and 5-year/unlimited-mile corrosion (perforation) coverage – all with no deductible. Please ask your Ford Dealer for a copy of this limited warranty. **Roadside Assistance.** Covers your vehicle for 5 years or 60,000 miles, so you have the security of knowing that help may be only a phone call away should you run out of fuel, lock yourself out of the vehicle, or need towing. Your Ford Dealer can provide complete details on all of these advantages. **Ford Credit.** Get the ride you want. Whether you plan to lease or finance, you'll find the choices that are right for you at Ford Credit. Ask your Ford Dealer for details or check us out at fordcredit.com. **Ford Extended Service Plan.** For a purchase or lease, the Ford Extended Service Plan (ESP) gives you "Peace-of-Mind" protection designed to cover key vehicle components and protect you from the cost of unexpected repairs. Ask your dealer for a Ford ESP, the only service contract backed exclusively by Ford and honored at all Ford Lincoln Mercury dealerships. **Insurance Services.** Get Ford Motor Company quality in your auto insurance. Our program offers industry-leading benefits and competitive rates. Call 1-877-367-3847, or visit us at fordvip.com for a no-obligation quote. Insurance offered by American Road Services Company (in CA, American Road Insurance Agency), a licensed agency and subsidiary of Ford Motor Company. **Comparisons based on 2011 competitive models (class is V6 and V8 Sports Cars), publicly available information and Ford certification data at time of release. Some features discussed may be optional. Vehicles shown may contain optional equipment. Features shown may be offered only in combination with other options or subject to additional ordering requirements or limitations. Dimensions shown may vary due to optional features and/or production variability. Following release of the PDF, certain changes in standard equipment, options and the like, or product delays may have occurred which would not be included in these pages. Your Ford Dealer is the best source for up-to-date information. Ford Division reserves the right to change product specifications at any time without incurring obligations. Genuine Ford Accessories will be warranted for whichever provides you the greatest benefit: 12 months or 12,000 miles (whichever occurs first), or the remainder of your Bumper-to-Bumper 3-year/36,000-mile New Vehicle Limited Warranty. Ford Licensed Accessories (FLA) are warranted by the accessory manufacturer's warranty. Ford Licensed Accessories are fully designed and developed by the accessory manufacturer and have not been designed or tested to Ford Motor Company engineering requirements. Contact your Ford Dealer for warranty details.**



Drive one.